

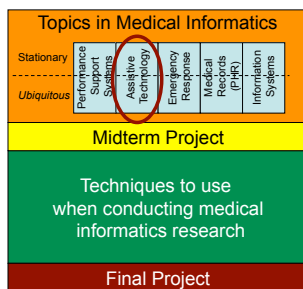
Assistive Technologies: Helping the Ill

Class 7

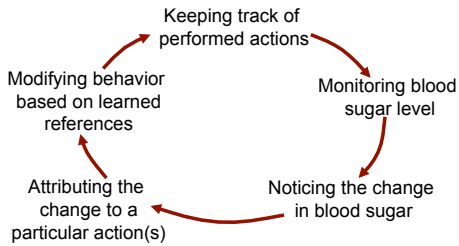
Agenda

- 3:00-3:25 Presentation by Dola
- 3:25-3:50 Assistive Technologies for the Ill

Where are we?



Identify current trends



Expert/Practitioner review of information

We have to know everything – what type of bread, how much mayo...lettuce...everything.

I would just like to know a rough estimate of what they eat because right now I get nothing from them. I just coach them as best as possible. I try to tell them - if you are going to a party and you know you will want that piece of cake, that's okay, go ahead and have it. But then have something really light for breakfast. Or dance at the party for a couple of hours.

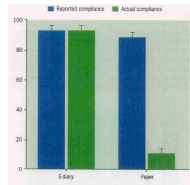
Prototype – What would you think of introducing to a population? Why?

- A: Diabetes
- B: Cancer
- C: Chronic Pain
- D: Heart Disease
- E: Obesity



- Glucose watch
- Motion detector
- Electronic diary
- Video cam

You can develop it...
but will they use it?



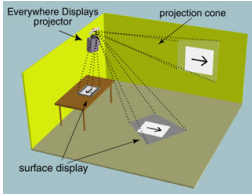
*Subjects falsified 79% of paper diary cards!
...but e-diary has reminder system...*

Does compliance mean adoption?

How to choose suitable
HW/SW for AT?



How to choose suitable HW/SW for AT?



Claudio Pinhanez, IBM Research

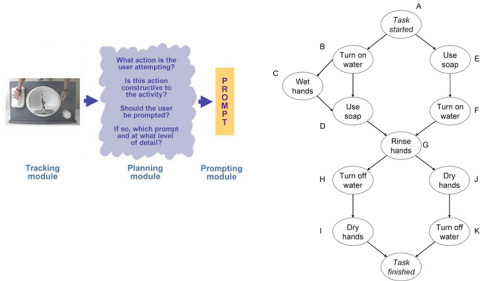
What should we consider when selecting HW/SW for AT?

Context-aware AT: *Everywhere*



Alex Mihailidis, <http://www.etsi.com/etoronto/caslab/index.htm>

Context-aware AT System



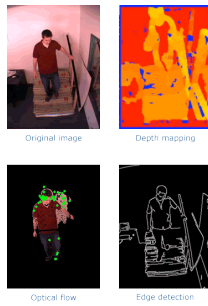
Alex Mihailidis, <http://www.oi.utoronto.ca/fats/index.htm>

Context-aware AT



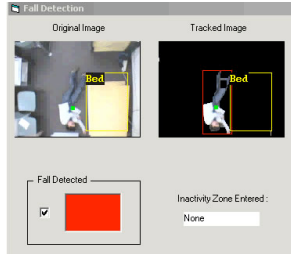
Alex Mihailidis, <http://www.oi.utoronto.ca/fats/index.htm>

Context-aware AT: At your aid



Alex Mihailidis, <http://www.oi.utoronto.ca/fats/index.htm>

Context-aware AT: Detecting where you are...



Alex Mihailidis, <http://www.ri.cmu.edu/~afml/index.htm>

What is an assistive technology?

Assistive technologies describes technological devices or software that have been designed to assist people with disabilities (Dawe 2006).

What is an assistive technology?

Assistive technologies describes technological devices or software that have been designed to assist people with disabilities (Dawe 2006).

Assistive systems pair human computer interaction techniques and technology to enhance the health and abilities for people with various special needs.

Next Meeting

- Quiz Friday
